

ART AND DESIGN

Mar. 2022 – 1½ hours



Name Index Number

Candidate's Signature Date

Instructions to candidates

- (a) Write your name and index number in the spaces provided above.
- (b) Sign and write the date of examination in the spaces provided above.
- (c) This paper consists of **three** sections; **A**, **B** and **C**.
- (d) Answer **all** the questions in sections **A** and **B**.
- (e) Answer any **one** question from section **C**.
- (f) Answers to **all** the questions must be written in the spaces provided.
- (g) Where drawings and diagrams are appropriate, they should be included within the text of your answers.
- (h) **This paper consists of 12 printed pages.**
- (i) **Candidates should check the question paper to ascertain that all the pages are printed as indicated and that no questions are missing.**
- (j) **Candidates should answer the questions in English.**

For Examiner's Use Only

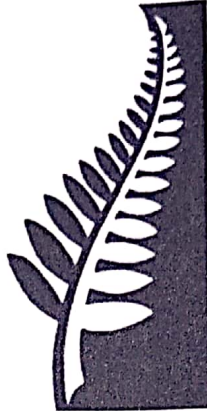
Section	Questions	Maximum Score	Candidate's Score
A	1	20	
	2	05	
B	3	05	
	4	05	
	5	05	
	6	05	
C		15	
Total Score		60	



SECTION A (20 marks)

Answer all the questions in this section in the spaces provided.

1. (a) Distinguish between the **two** types of space used in the illustration below. (2 marks)



.....

.....

.....

.....

.....

.....

.....

.....

.....

.....

- (b) Explain how pattern is used to create rhythm in a work of art. (2 marks)

.....

.....

.....

.....

.....

.....

.....

.....

.....

.....



- (c) Name **two** tools used in oil painting technique. (2 marks)

.....

.....

.....

.....

.....

.....

.....

.....

- (d) List **two** types of ornaments worn around the arms. (2 marks)

.....

.....

.....

.....

.....

.....

.....

.....

- (e) The table below consists of painting media and their respective binding substances.

Complete the table by filling in the missing medium and binding substances.

	Medium	Binder
1	(½ mark)	Egg Yolk
2	Water colour	(½ mark)
3	Acrylic paint	(1 mark)



(f) Identify **two** uses of line in graphic design.

(2 marks)

.....

.....

.....

.....

.....

.....

.....

.....

.....

.....

(g) Highlight **one** reason why paraffin wax and beeswax are mixed during batik process.

(2 marks)

.....

.....

.....

.....

.....

.....

.....

.....

.....

.....

(h) Distinguish between a monochromatic colour scheme and an analogous colour scheme.

(2 marks)

.....

.....

.....

.....

.....

.....

.....

.....

.....

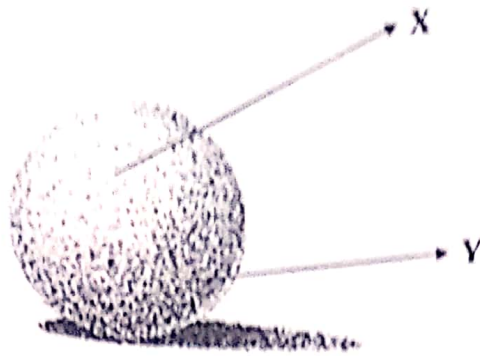
.....

209

A001



- (i) Analyse the illustration below and label the parts marked X and Y. (2 mark)



.....

.....

.....

.....

- (j) Study the artwork below and state the technique used to produce it. (2 marks)



.....

.....

.....

.....

.....

.....

209

A001



SECTION B (25 marks)

Answer all the questions in this section in the spaces provided.

2. (a) Highlight **one** limitation of using wood as a material in sculpture making. (1 mark)

.....

.....

.....

.....

- (b) State **two** reasons why grog is added to clay. (2 marks)

.....

.....

.....

.....

.....

- (c) Explain the term assemblage as used in sculpture. (2 marks)

.....

.....

.....

.....

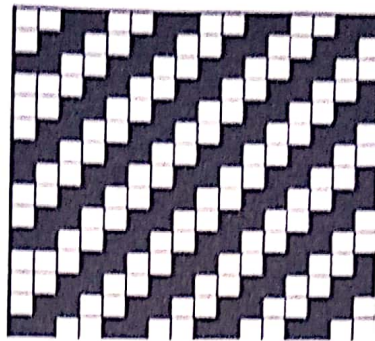
.....

209

A001



3. The diagram below represents a technique in weaving.



(a) Identify the technique. (1 mark)

.....
.....

(b) Explain **two** characteristics of the weave structure. (2 marks)

.....
.....
.....
.....

(c) Outline the process of making the weave. (2 marks)

.....
.....
.....
.....
.....
.....
.....
.....
.....
.....

4. The image below is a work of art.



(a) Identify the type of artwork.

(1 mark)

.....
.....

(b) State **two** tools used in the execution of the artwork.

(2 marks)

.....
.....
.....

(c) Explain the challenges faced by artists associated with the artwork.

(2 marks)

.....
.....
.....
.....
.....
.....
.....
.....
.....
.....
.....

209

A001



209

A001



914061

Kenya Certificate of Secondary Education, 2021
442/1

Turn over

209

A001

THIS IS THE LAST PRINTED PAGE.



914061

Kenya Certificate of Secondary Education, 2021
442/1